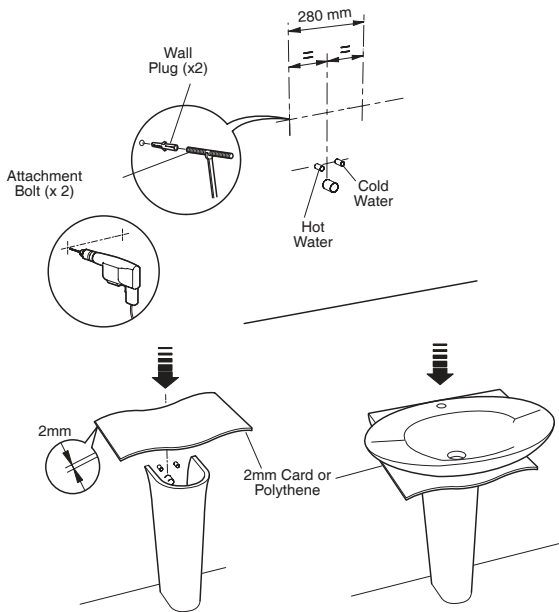


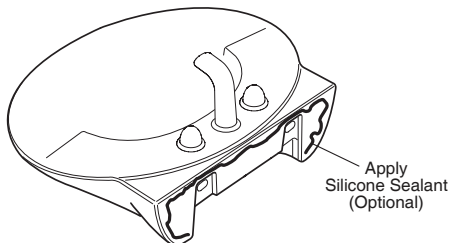
### INSTALLATION

#### Install the Basin

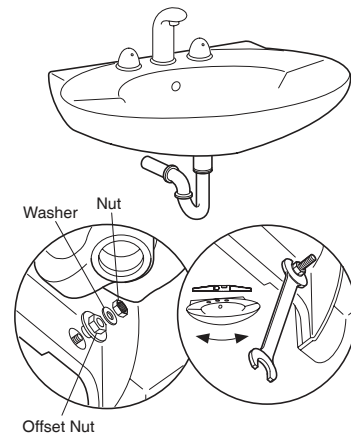
1. Make sure that the basin is installed by a competent installer.



2. Install the services.
3. Make sure that the hot and cold water supply pipes and the waste are installed correctly.
4. Position the pedestal and place a 2 mm thick piece of card or polythene on top of it. Place the basin on top of this and ensure it is level (not required if using semi-pedestal).
5. Mark through the positions of the fixing holes.
6. Remove the basin and drill the fixing holes.
7. Fit the wall plugs and the attachment bolts.
8. Fit the tap and waste to the basin in accordance with the manufacturer's instructions.

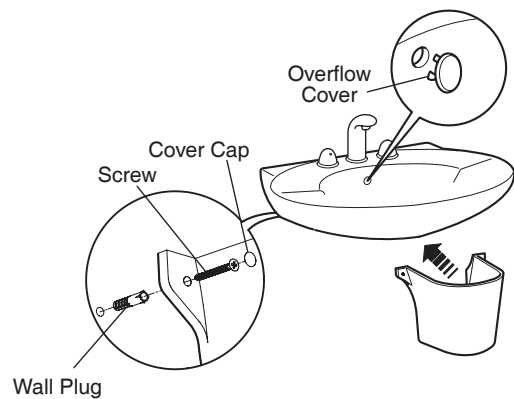


9. Apply silicone sealant to the back of the basin (optional).



10. Fit the basin in position over the attachment bolts
11. Adjust the offset nut until the basin is level.
12. When the basin is level, fit the washers and the nuts and secure in place.
13. Remove any excess silicone sealant.
14. Reposition the full pedestal (if required).

#### Install the Semi-Pedestal



1. Hold the semi-pedestal in position and mark the position of the fixing holes.
2. Drill the holes and secure the semi-pedestal in position with wall plugs and screws. Place cover caps over the heads of the screws.
3. Place the overflow cover over the overflow hole in the basin (if supplied).

### USER MAINTENANCE

#### Cleaning

#### Caution! Risk of product damage.

Many cleaners contain abrasive and chemical substances, and should not be used for cleaning stainless steel, enamel, plated or plastic fittings.

These finishes should be cleaned using a mild washing up detergent or soap solution, rinsed and then wiped dry with a soft clean cloth.